

# Monday, May 13, 2019

Your Learning Goal: SWBAT engage in an owl pellet dissection to recreate limb bone structures and compare them to that of ancient fish transitional species.

## Present Day Vertebrates- 48 L + R

### Catalyst 48 L:

- What similarities and differences can you identify when examining the limb bones of different species alive and **extinct**.



Homework:

Notebook check next week!



Agenda:

- Catalyst
- Owl Pellet Dissection
- LEAF

# Table of Contents

<u>Date</u>	<u>Assignment</u>	<u>Pg #</u>
4/23/19	Condor Genetics	45L + R
5/2/19	The Fossil Record	46 L + R
5/9/19	Transitions	47 L + R
5/13/19	Present Day Vertebrates	48 L + R

5/13/19

Present Day Vertebrates

Catalyst:

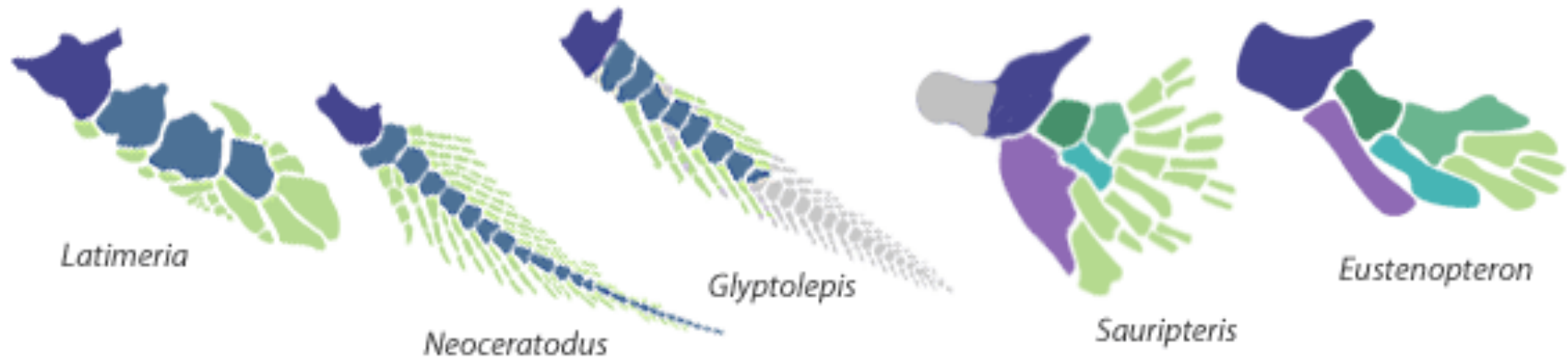
What similarities and differences can you identify when examining the limb bones of different species alive and **extinct**.

LEAF:

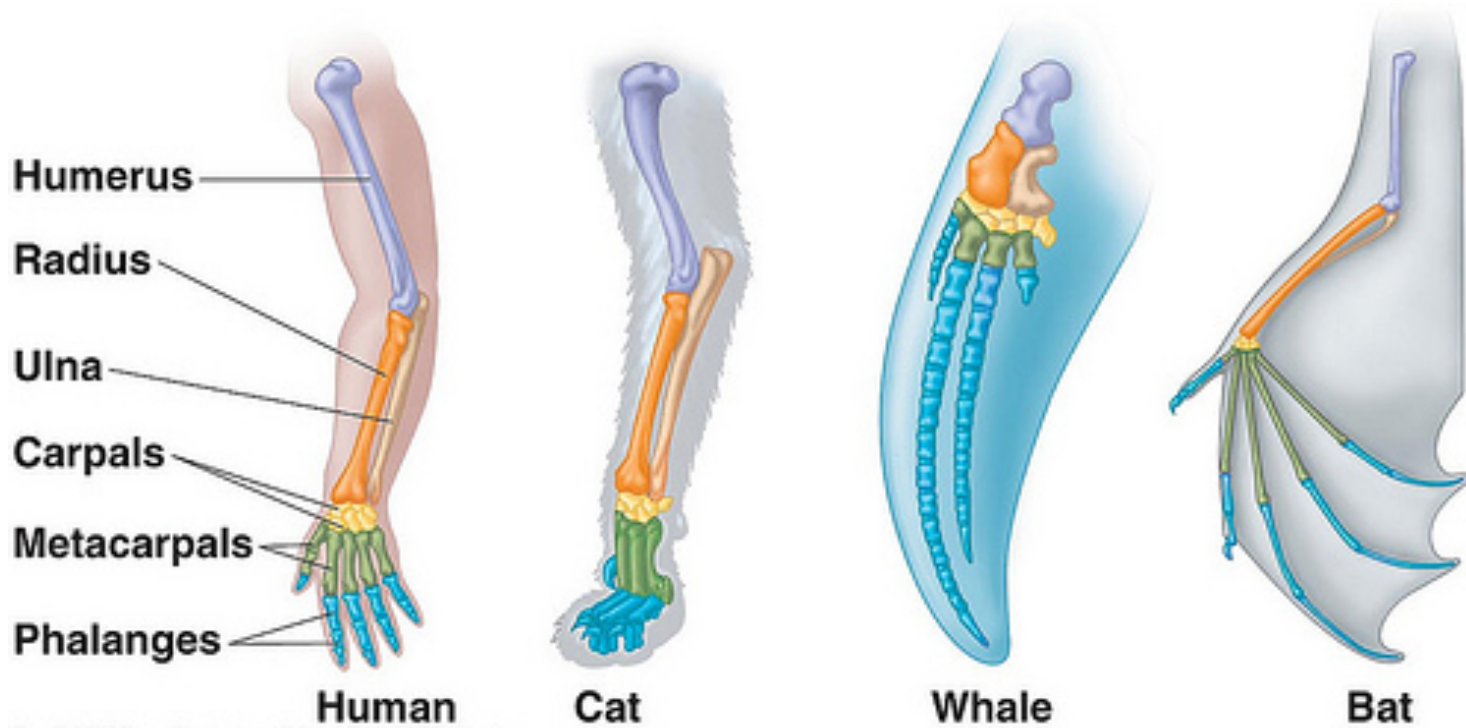
**48L**

**48R**

# 3 Similarities and 3 Differences



- humerus
- mesomeres
- radials
- radius
- ulna
- ulnare
- intermedium
- missing



**48L**

# Focus Question

- What does the **fossil** record tell us about life on Earth?



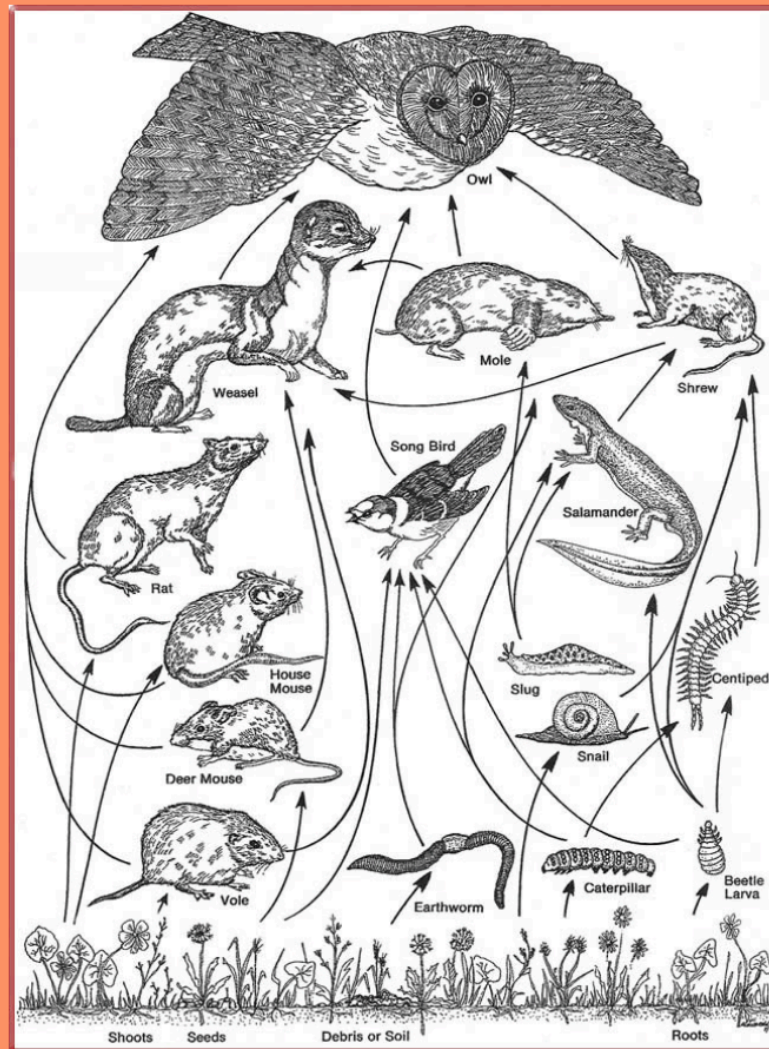


# Owl Pellet Dissection!



<https://www.youtube.com/watch?v=waLiTmLr1nM&frags=pl%2Cwn>

# What Do Owls Eat?



# Materials



**Owl Pellet**



**Forceps**



**Tooth Pick**



**Paper Plate**





**Recreate your Skeletons Here**

---

**Catalyst:**

What similarities and differences can you identify when examining the limb bones of different species alive and **extinct**.

**LEAF:**

**48L**

5/13/19

**Present Day Vertebrates**

Sketch your skeletons **HERE**

<b>Observations</b>	<b>Inferences</b>

**48R**

**Catalyst:**

What similarities and differences can you identify when examining the limb bones of different species alive and **extinct**.

**LEAF:**

How does the fossil record help us explain why there is so much diversity of life on earth?

**48L**

5/13/19

**Present Day Vertebrates**

Sketch your skeletons **HERE**

<b>Observations</b>	<b>Inferences</b>

**48R**